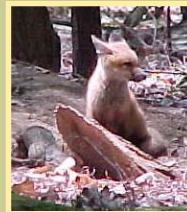
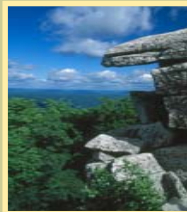




Ulster County Open Space Plan

Resource Protection and Management
Ellenville - September 19, 2007



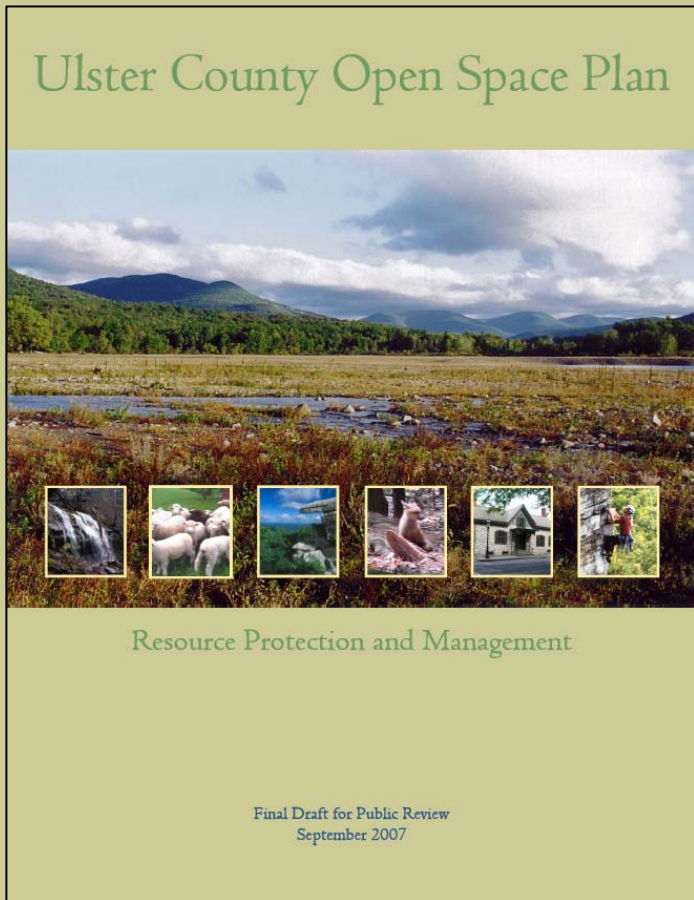
Public Meeting Agenda

- Welcome & Introduction: Purpose of this Meeting
- Brief Review of the Plan Structure
- Discussion of the Findings and Recommendations
- Accomplishments
- Public Meeting Process and Approval Schedule
- Feedback

Plan Team

- Coordinated Effort between the Environmental Management Council and Planning Board
 - EMC: Open Space Committee (David Straus, Chair) - Plan Coordination & Review
 - Planning: Jennifer Schwartz - Plan Team Management, Research, Writing, and Graphics
 - Information Services and Planning Dept: GIS mapping
 - Stakeholders: Resource Area and Strategies Input, Photography, GIS layers
- EMC: approved Draft Plan for public comment
- Planning Board: approves Plan for consideration by Legislature

Plan Structure



1. Introduction
2. Development of the Plan
3. Open Space Resources in Ulster County
4. Recommended Actions and Implementation
5. Executive Summary and Map Book

Web Access to Plan and Maps

www.co.ulster.ny.us/planning/ospace.shtml



The graphic is a central rectangular panel with a white border. At the top, the title "Ulster County Open Space Plan" is written in a green, serif font. Below the title is a large landscape photograph of a valley with a river, green hills, and a cloudy sky. Underneath the photograph is a row of six small, square inset images: a waterfall, a flock of sheep, a blue sky with white clouds, a person in a field, a small house, and a person walking. Below these images, the text "Executive Summary and Map Book" is centered in a black, serif font. The central panel is surrounded by a grid of 16 smaller maps of Ulster County, each showing different geographical features or planning zones in various colors like green, blue, yellow, and purple.

Ulster County Open Space Plan

Executive Summary and Map Book

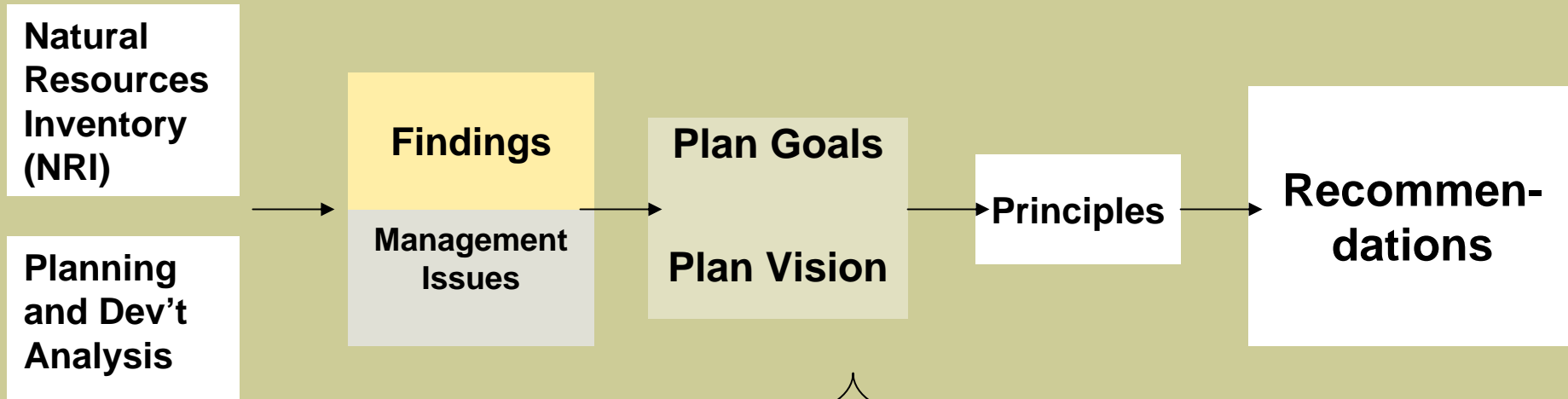
I. Introduction

- Why does Ulster County need an Open Space Plan?
 - Development Pressure > *Proactive*, Integrated Planning
 - Fragmentation > Coordination
 - Incentives
 - Quality of Life

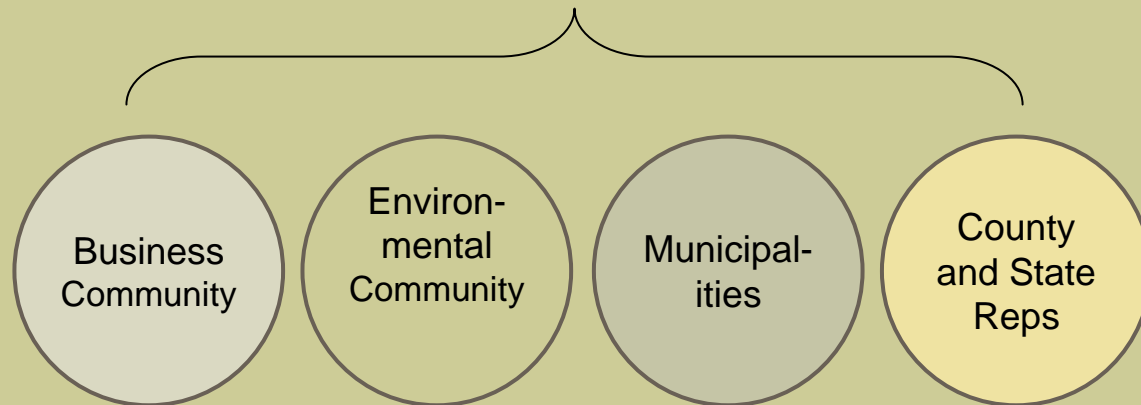
2. Development of the Plan

Planning & Environmental

Analysis:



Stakeholder Participation & SWOTS:



3. Open Space Resources in Ulster County

Resource Categories

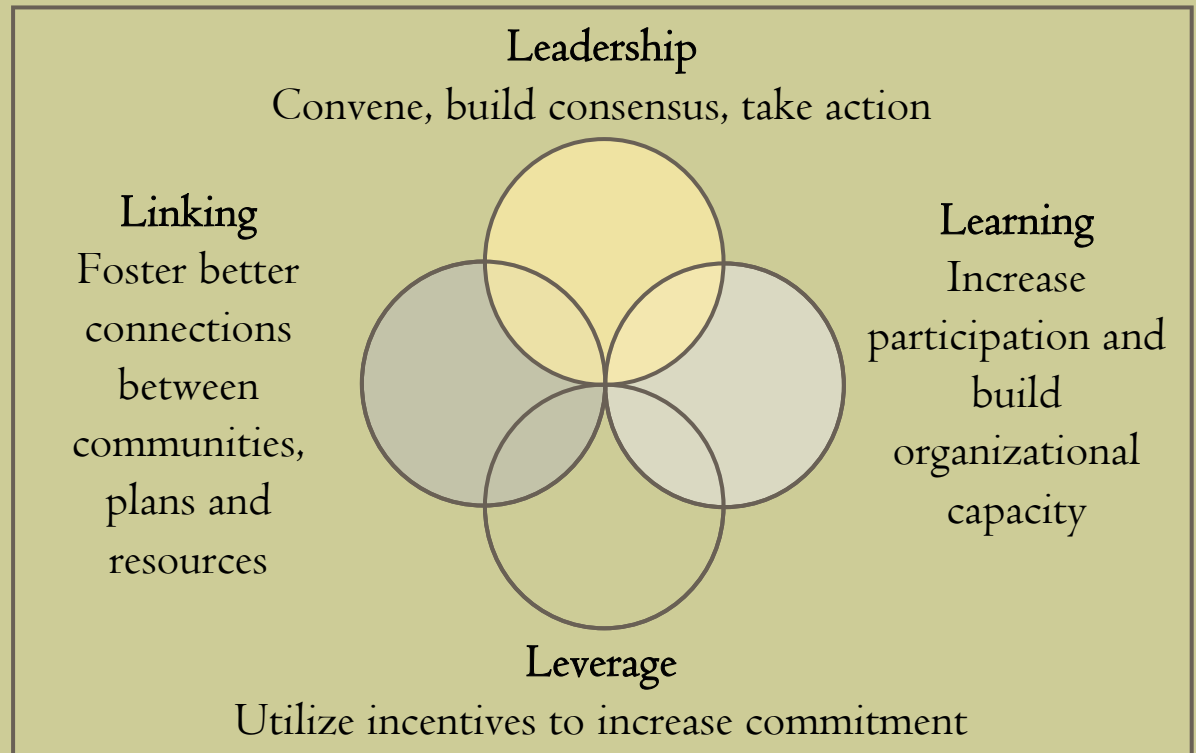
1. Protected Open Space
2. Water Resources
3. Working Landscapes
4. Landforms and Natural Features
5. Ecological Communities
6. Cultural and Historic Resources
7. Recreation Resources

4. Recommended Actions and Implementation

- The Management Framework and Work Program
- The Challenge and Reponse
- Recommended Actions
 - Strategic Actions:
 - Leadership, Linking, Learning and Leverage
 - Resource Strategies

Strategic Actions

1. Leadership
2. Linking
3. Learning
4. Leverage



Strategy #1 Leadership

Convene, build consensus, take action

Form Open Space Partnership:

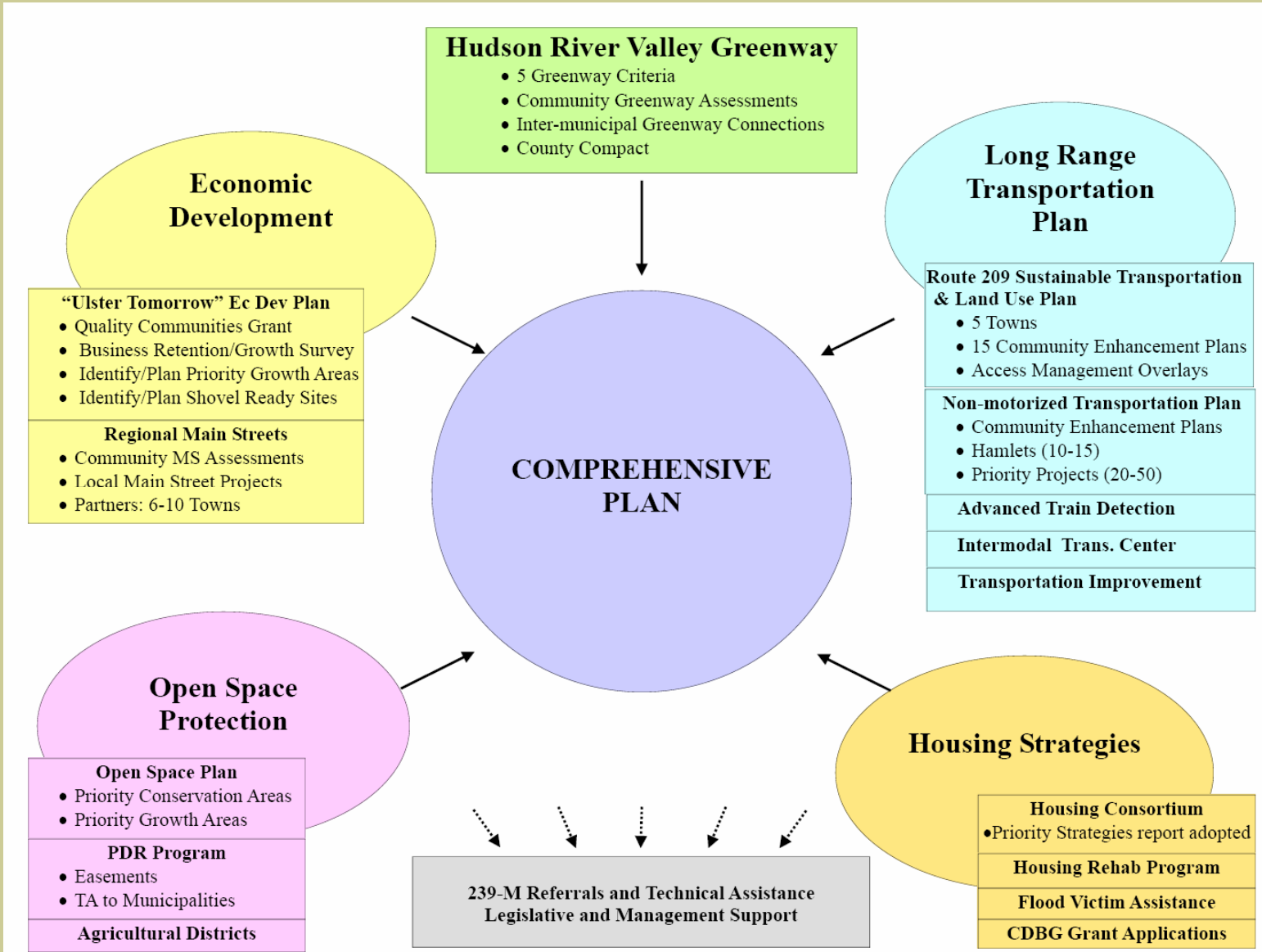
- County Government
- Local Government (Supervisors and Planning)
- Agricultural Associations
- Environmental Protection Organizations
- Land Trusts
- Business/Economic Development Entities
- Community-Based Organizations
- Youth/Education

Strategy #2 – Linking

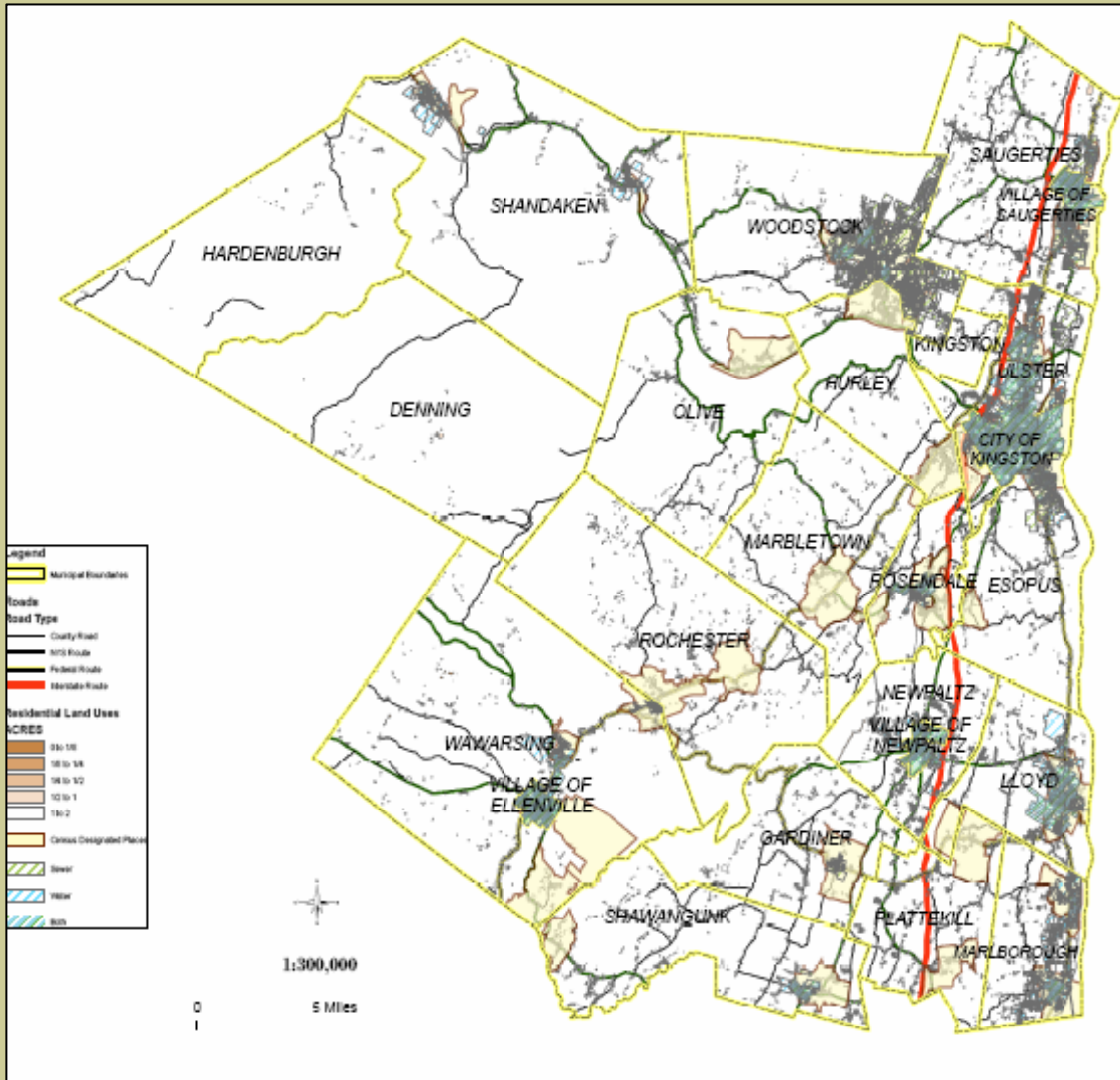
Foster better connections between communities, plans and resources

- “Toolbox”
- Clearinghouse and Database
- Regional Approach – Greenway and Intermunicipal Agreements
- Standardization and Streamlining (GIS, Natural Resource Inventories, procedures)
- “Priority Conservation Areas” and “Priority Growth Areas”

Linking Our Plans and Programs



Linking Conservation and Growth: Identifying “Priority Growth Areas”



Strategy #3 – Learning

Improve abilities to utilize open space protection tools

- Increase Training and Educational Materials
- Partner with leading community-based and non-profit organizations to assist in education
- Create a position to work with municipalities

Strategy #4 – Leverage

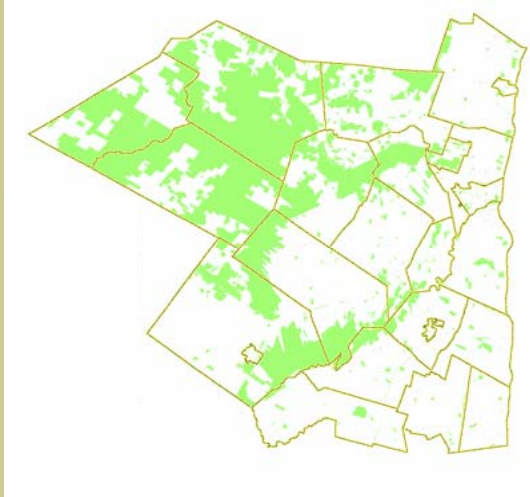
Utilize incentives to increase commitment to open space goals and policies

- Create Open Space Fund.
- Provide funds to match state, federal and non-profit sources.
- Provide incentives to support local comprehensive planning, open space planning, and zoning activities that follow this Plan's principles and goals.

Resource Strategies

1. Protected Open Space
2. Water Resources
3. Working Landscapes
4. Landforms and Natural Features
5. Ecological Communities
6. Historic and Cultural Resources
7. Recreational Resources

I. Protected Open Space



Key Findings

Management Issues

- Significant vulnerable areas are not protected, particularly related to water resources.
- Differing expectations contributes to frustration.
- Ongoing monitoring and stewardship of easements is important.
- Better understanding of resources is needed.



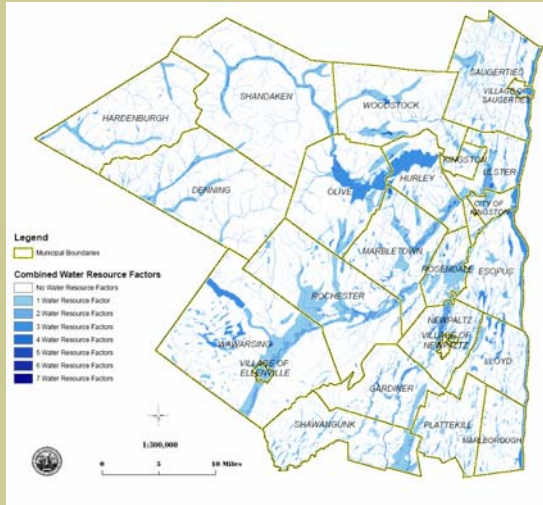
I. Protected Open Space

Recommendations

- Identify, permanently protect, and manage critical open space resources and systems by:
 - Supporting implementation Priority Conservation Areas
 - Coordinating goals with and among Municipalities



2. Water Resources



Key Findings

Management Issues

- Multiple levels of threat
- Numerous agencies involved
- More information, public education, and protection needed for groundwater and watersheds
- Links between water quality, recreation and development should be better understood
- Improved protection and awareness needed for floodplains



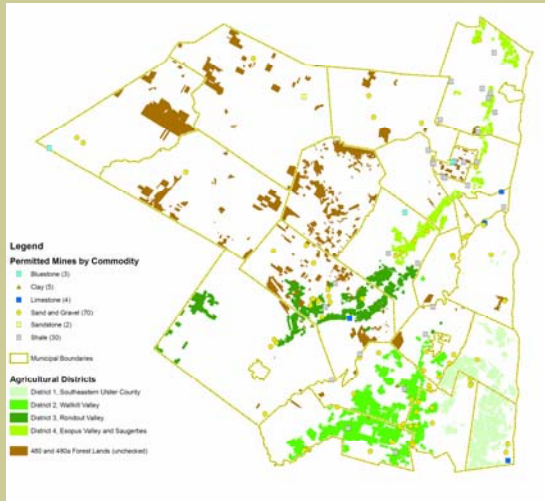
2. Water Resources

Recommendations

- Protect and manage water resources by:
 - Utilizing EPA's Watershed Approach Framework
 - Protecting water quality
 - Protecting waterways
 - Ensuring safe and adequate drinking water resources



3. Working Landscapes



Key Findings

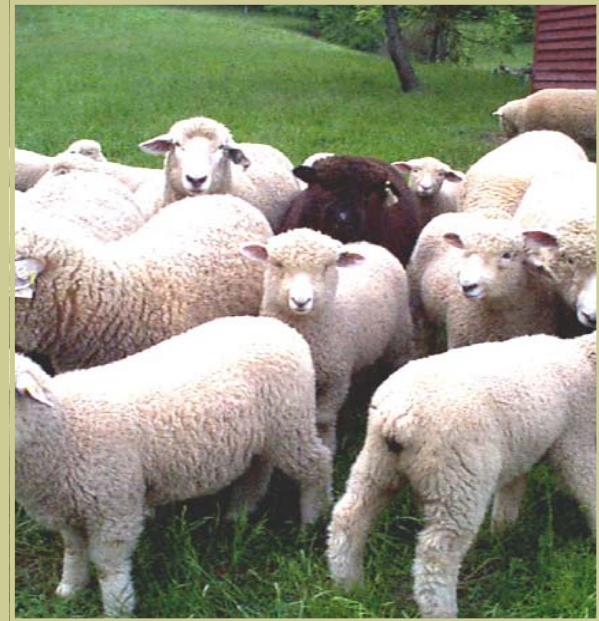
Management Issues

- Development pressure is an ongoing concern
- Current management and regulations of agricultural resources don't recognize level of threat
- Changing nature of farm operations should be integral to plans
- Tax treatment should continue to reflect needs

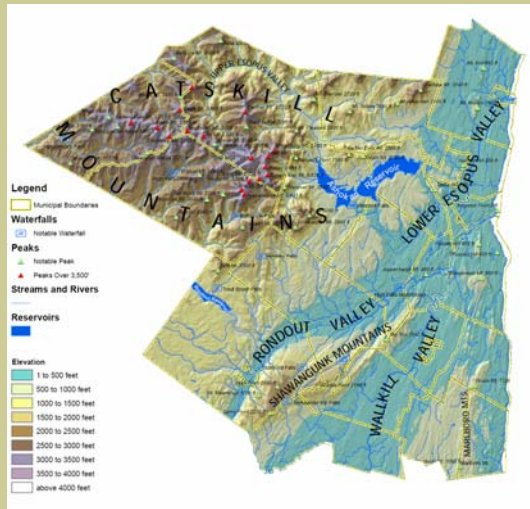
3. Working Landscapes

Recommendations

- Enhance the viability and protection of working landscapes by:
 - Supporting plans, programs and policies that promote agricultural viability
 - Developing and promote use of planning tools



4. Landforms and Natural Features



Key Findings

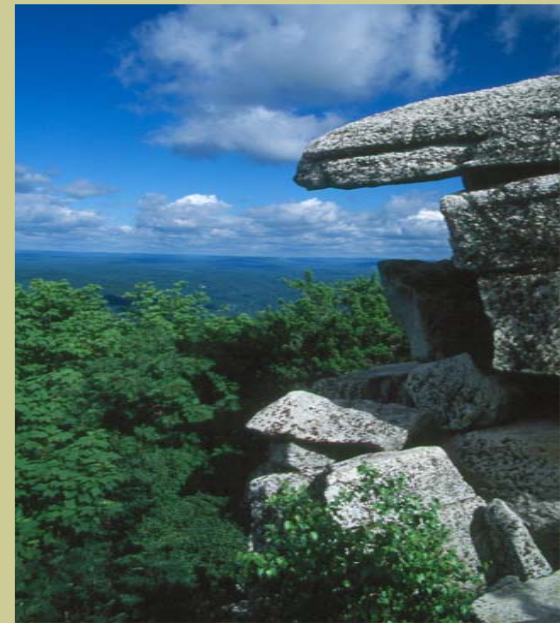
Management Issues

- Numerous programs exist for protection, many overlap with biodiversity issues.
- Inappropriate development can mar the visual or ecological values of these places.
- Recognition in comprehensive planning and zoning would assist municipalities in their protection.

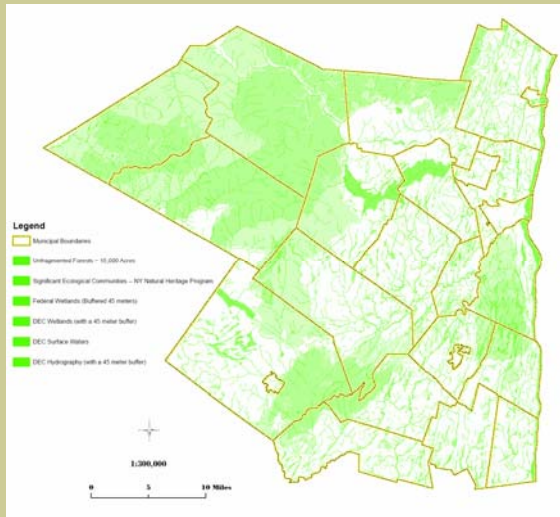
4. Landforms and Natural Features

Recommendations

- Protect the County's valuable landforms and natural features by:
 - Identifying landforms that require protection
 - Coordinating local and regional plans
 - Develop visualization and policies for landforms such as valleys, ridgelines, slopes, coastal areas, and scenic areas



5. Ecological Communities



Key Findings

Management Issues

- Intact and interconnected ecosystems are the primary means to ensure the continuation of critical ecological communities.
- Water resources and working landscapes are integral to this.
- Better understanding and inventory of these interconnections is needed.



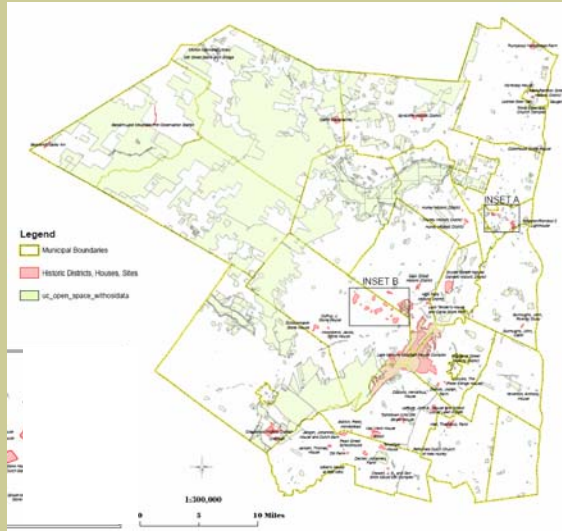
5. Ecological Communities

Recommendations

- Develop priority biodiversity areas and ensure that land use decisions incorporate habitat protection and species diversity by:
 - Coordinating local efforts to identify Biological Diversity Areas
 - Supporting efforts to increase inclusion of biodiversity identification in land use planning
 - Protect key habitat areas necessary to maintain ecological communities



6. Historic and Cultural Resources



Key Findings

Management Issues

- Often threatened by incompatible development, lack of awareness, funds, statutes and guidelines.
- Their economic and educational potential is not maximized.
- More inventory and stewardship needed.



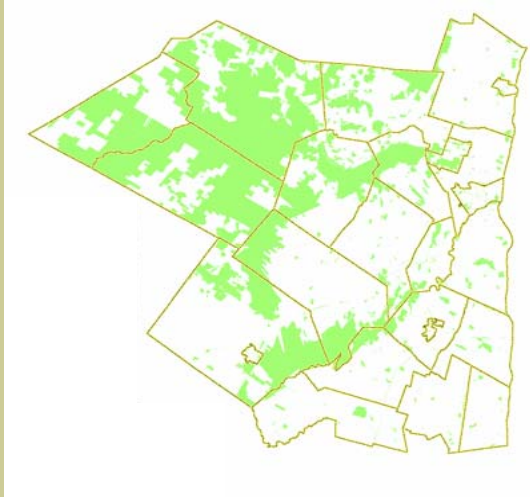
6. Historic and Cultural Resources

Recommendations

- Promote stewardship of historic and cultural resources through:
 - Identification and coordinated inventories
 - Promoting awareness, education and outreach
 - Linking preservation planning to development
 - Using preservation as a catalyst for revitalization



7. Recreational Resources



Key Findings

Management Issues

- Distribution of resources is uneven.
- Management and investment in facilities should be more systematic and dynamic.
- Better links are needed between communities, trails, transportation, and tourism.
- School facilities could be better incorporated in system.

7. Recreational Resources

Recommendations

- Create, preserve, enhance and provide managed access to parks, hiking trails, active and passive recreation facilities, and historic resources by:
 - Creating additional recreational opportunities
 - Enhancing greater access to existing recreational resources



Accomplishments

- Integrated Plans and Strategies:
Transportation, Housing, Economic Development,
Open Space
- Emphasis on Implementation :
 - PDR Program
 - Ulster Tomorrow
 - Greenway
 - Shovel-Ready Sites, Priority Growth Areas and Infrastructure
 - Collaboration Between County Departments
 - Department of the Environment

Public Meeting Process and Approval Schedule

Wed., Sept. 19	Ellenville
Mon., Sept. 24	Saugerties
Tues., Sept. 25	New Paltz
Thurs., Sept. 27	Woodstock
Mon., Oct. 1	Marlboro
Wed., Oct. 3	Kingston
Wed. Nov. 7	<u>Public Hearing (tentative) and Final Comments Due</u>



Revised Public Hearing Date

Feedback

Contact Information and Website:

Ulster County Planning Board

244 Fair Street, PO Box 1800

Kingston, NY 12402

Tel (845)340-3340

Fax (845) 340-3429

E-mail: planning@co.ulster.ny.us

Visit the Plan website at:

www.co.ulster.ny.us/planning/ospace.shtml

Final public comments due no later than Nov. 7, 2007.

Comments may be submitted by mail, e-mail, fax or in person at the Public Hearing on Nov. 7, County Office Building, 6 pm.