

Ulster County, New York Open Space Plan

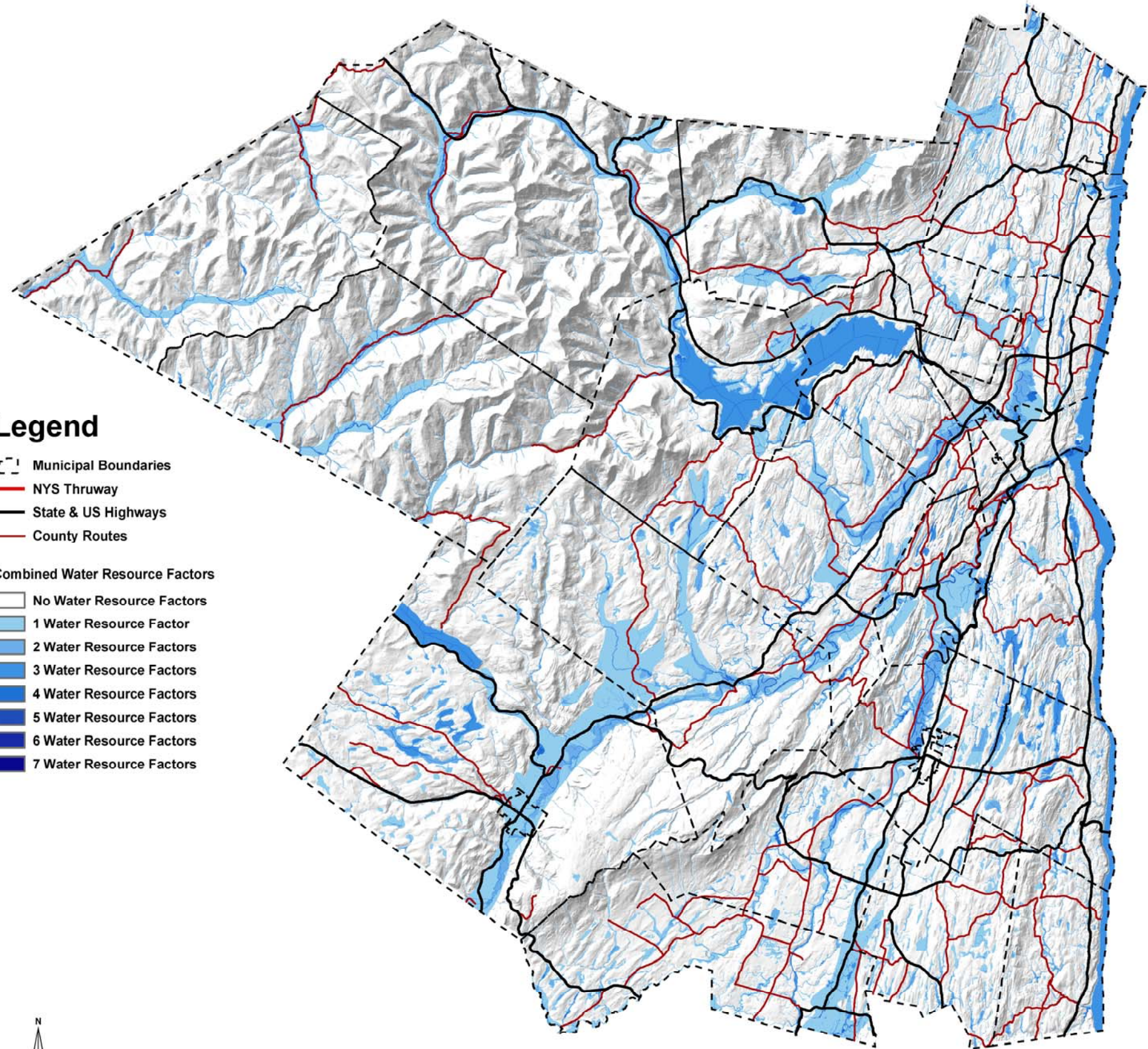
2. Water Resources Composite

Through the display of the "Combined Water Resource Factors" data layer in shades ranging from light blue to darker blue, this map shows relative density of the distribution of water resources in Ulster County. To interpret the map, areas that are darker blue represent areas where more than one water resource factor is found at that location or area.

Combined Water Resource Factors Data Explained

Seven data layers, available in digital format, were chosen as inputs to create the Combined Water Resource Factors data layer. These data layers were chosen for their relationship to water as a resource for human and non-human uses. The following table provides a description of the source data used for these seven data layers.

Factor	Where Acquired	Description of Data
Aquifers (polygon)	New York State Department of Health (1989 data)	Aquifer data taken from 5 USGS Water Resource Investigation maps. Data displays all aquifers from those investigations that are greater than 1 square mile in size.
Floodplains (polygon)	Federal Emergency Management Agency	Unofficial digital version of official NFIP Flood Insurance Rate Maps
Streams (line)	New York State DEC, Division of Water	Streams of New York State as taken from USGS "blue line separation" from 1:24,000 scale topographic map series. Data has been edited by NYS DEC to include additional stream segments
Surface Waters (polygon)	New York State DEC, Division of Water	Surface waters of New York State as taken from USGS "blue line separation" from 1:24,000 scale topographic map series.
Wetlands (New York State DEC, polygon)	New York State DEC Wetlands Data, from CORNELL CUGIR website	New York State regulated wetlands.
Wetlands (NWI, polygon)	United States Fish and Wildlife Service	Federal National Wetlands Inventory wetlands.
Wetlands (NWI, linear)	United States Fish and Wildlife Service	Federal National Wetlands Inventory wetlands.



Legend

- Municipal Boundaries
 - NYS Thruway
 - State & US Highways
 - County Routes
- Combined Water Resource Factors
- No Water Resource Factors
 - 1 Water Resource Factor
 - 2 Water Resource Factors
 - 3 Water Resource Factors
 - 4 Water Resource Factors
 - 5 Water Resource Factors
 - 6 Water Resource Factors
 - 7 Water Resource Factors



Ulster County Planning Board
244 Fair Street
PO Box 1800
Kingston, NY 12401
845-340-3340

Datum and Projection: NAD 27, UTM 18
Map Date: June 2009



0 5 10 Miles

This map is for informational purposes and was not prepared for legal, engineering, or surveying purposes. Users of this information should consult the primary data and information sources to ascertain the usability of the information.