

Ulster County, New York Open Space Plan

2d. Surface Waters

This map displays surface waters found in Ulster County, New York.

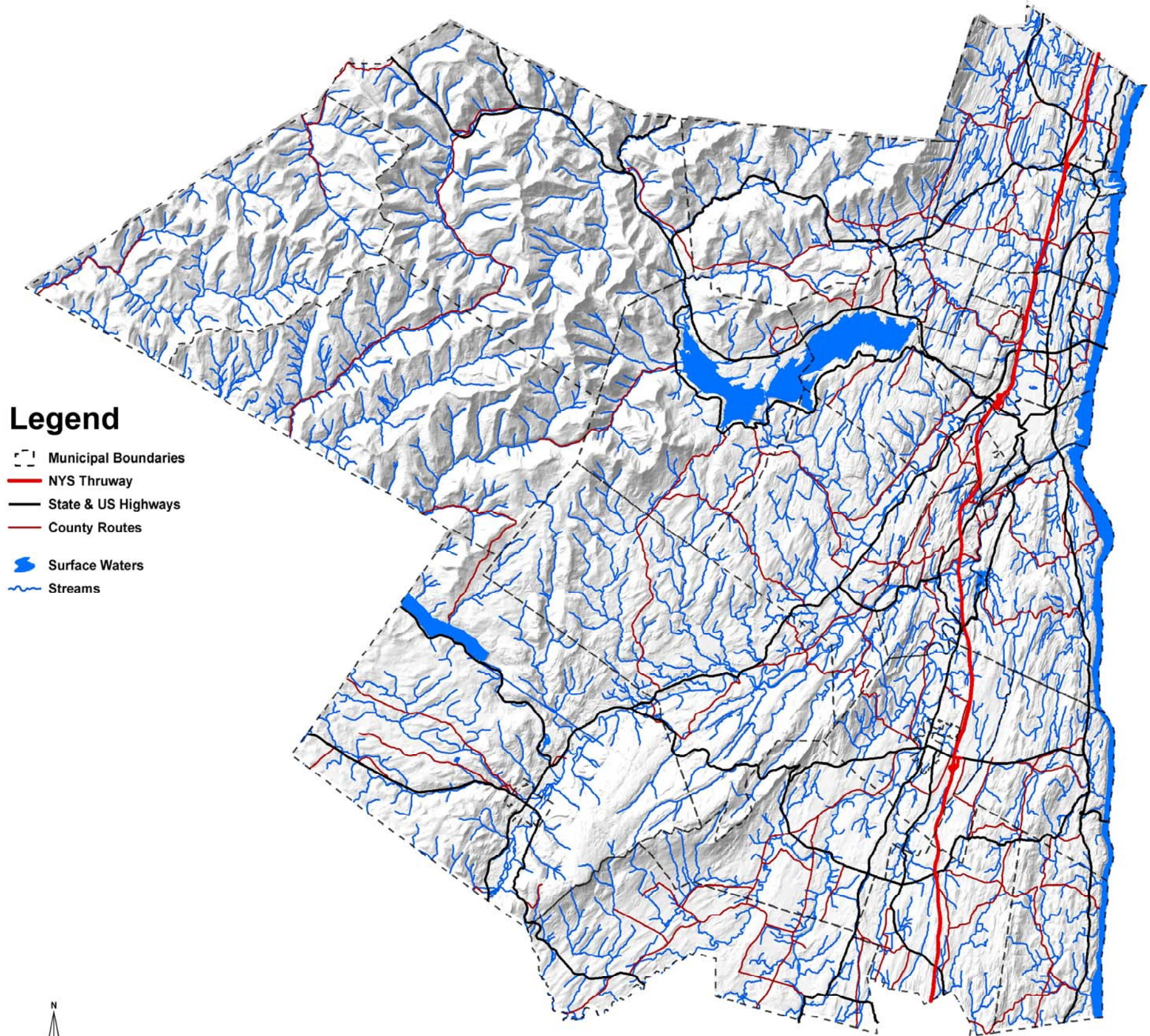
According to the U.S. Geological Survey, there are approximately 34.28 square miles of water area in Ulster County (<http://ny.cf.er.usgs.gov/nywin/county.cfm?countyCode=111>).

In addition, according to the New York State data displayed on this map, there are approximately 2,147 miles of stream in Ulster County.

Surface Water Source Data Explained

The data used to display the surface waters on this map came from the sources listed in the table below.

Surface Waters Source Data	Where Acquired	Description of Data (excerpted from metadata)
<i>Ulster County Streams</i>	Draft data acquired from NYS Department of Environmental Conservation, Division of Water (2005).	Both streams and surface waters derived from the New York State 1:24,000 Hydrography Network Coverages Description: Water features (streams, rivers, lakes, wetlands, etc.) from U.S. Geological Survey 1:24,000 Quadrangle Maps. Data sets available by HUC Cataloging Unit. Each HUC Cataloging Unit consists of three ARC/Info coverages; a linear network coverage, a surface water coverage, and a wetland coverage. Source of Information: Source 1:24,000 Hydrography Digital Line Graph (DLG) data for New York State. DLG data created by NYS-DEC DOW, and US Geological Survey - National Mapping Division. Development History: Hydrography source is USGS 1:24,000 Hydrography DLG Quadrangles. DLG source is USGS Blue Line Separates developed in 1941-1985 (USGS Quadrangle Maps). DLG data digitized and attributed by NYS-DEC DOW. DLG quality control by NYS-DEC DOW and US Geological Survey - National Mapping Division.
<i>Ulster County Surface Waters</i>	Draft data acquired from NYS Department of Environmental Conservation, Division of Water (2005).	



Legend

- Municipal Boundaries
- NYS Thruway
- State & US Highways
- County Routes
- Surface Waters
- Streams



Ulster County Planning Board
244 Fair Street
PO Box 1800
Kingston, NY 12401
845-340-3340

Datum and Projection: NAD 27, UTM 18
Map Date: June 2009



0 5 10 Miles

This map is for informational purposes and was not prepared for legal, engineering, or surveying purposes. Users of this information should consult the primary data and information sources to ascertain the usability of the information.