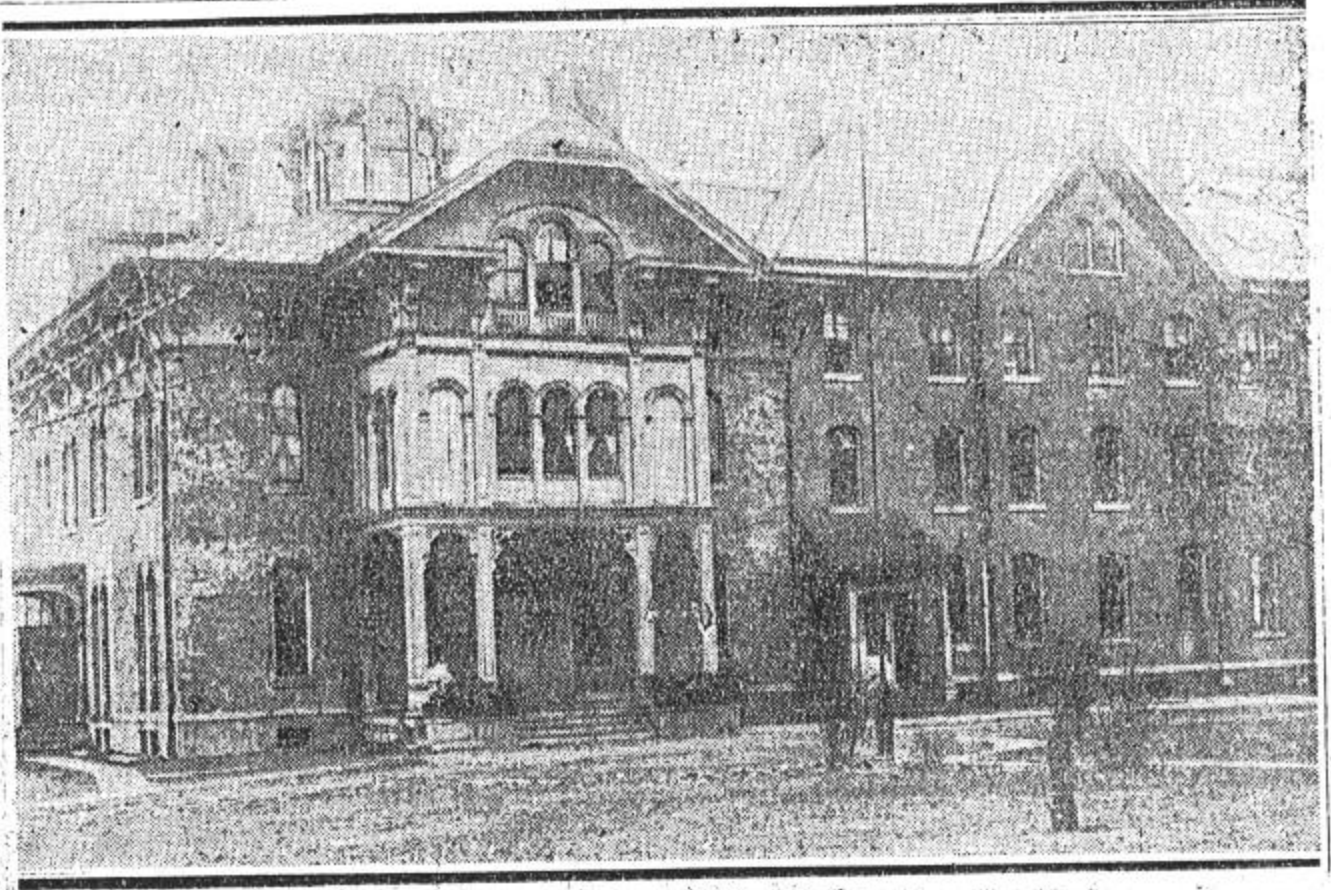


"The Story Behind..."

XXVI.

Susquehanna Valley Home



OLDEST of Binghamton's charitable institutions is the Susquehanna Valley Home, on a knoll above the Susquehanna river almost opposite the Binghamton State hospital.

It was founded March 15, 1869, through the efforts of Dr. John G. Orton, for destitute and orphan children who, previously, had been herded together with adults in what was then known as the "almshouse."

For two years the home was housed in the building now occupied by St. Mary's Home, then known as Susquehanna Seminary. Associated with Dr. Orton on the first board of managers were Abel Bennett, William R. Osborn, William E. Taylor, William M. Ely, Dr. Franklin T. Maybury, J. Stuart Wells, Benjamin N. Loomis, Charles McKhney, Moses T. Morgan and Charles A. Whitney.

In 1871 the present site of 45 acres was purchased for \$19,000 by the board of managers who were personally responsible for the payment. In a few years the managers found themselves heavily burdened with debt and the Home

threatened with dissolution. Then, in 1875, George Sherwood, assemblyman from Broome, obtained an appropriation of \$15,000 from the state and the indebtedness was paid.

Two wings have been added and the home now includes a kindergarten, hospital, gymnasium and auditorium. It is supported by the board of supervisors, the churches, fraternal organizations and individuals.

At present there are 242 children in the home. The cost of maintenance for each is \$8 a week. The children go to the public schools and to the churches of their choice. Athletics and Boy and Girl Scout troops are a part of the home life. Moving pictures are shown on an average of once in two weeks. And the children plant their own flower gardens.

Next—Commercial Travelers' Home Site.